



Preferred Palette

Laminates



Kensington Maple
10776-60



Tuscan Walnut
7921-38



Biltmore Cherry
7924K-07



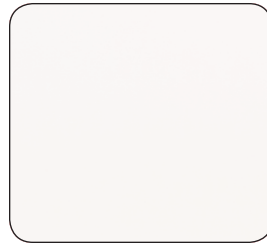
Skyline Walnut
7964K-12



Organic Cotton
4945-38



Almond Leather
2932-60

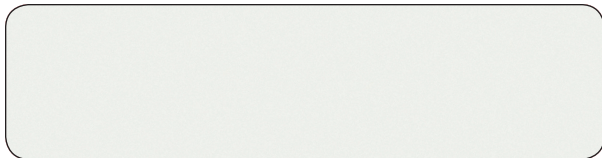


Designer White
D354-60

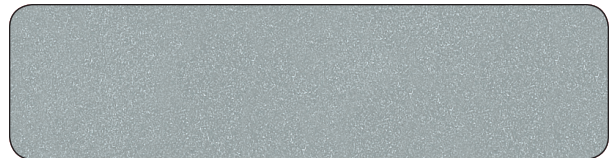


Fashion Grey
D381-60

Paints



Designer White

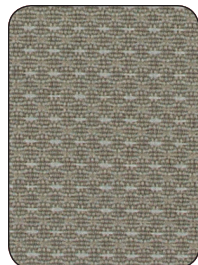


Designer Grey

Fabrics



Traction
7757 Earth



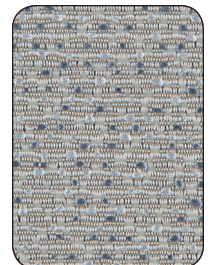
Traction
7759 Chrome



Columbus
7922 Silver



Century
7179 Fossil



Century
7180 Atlantic

Samples available upon request. Many more finishes available!



1.800.817.1187 conklinoffice.com



Preferred Palette

Fabric Information

Technical Information

	Century	Columbus	Traction
Contents	100% Polyester	100% Polyester	100% Polyester
Weight	12.6 oz lin/yd	11.08 oz lin/yd	11.7 oz lin/yd
Ends / Picks	145 / 61	78 / 25	123 / 34
Directional	Yes	Yes	Yes
Railroaded	No	No	No
Roll Width	66"	66"	66"

Flammability* Information

	Century	Columbus	Traction
ASTM E-84	Class A or 1	Class A or 1	Class A or 1
California TB 117-E	Passes	Passes	Passes

*Flammability: This term and any corresponding data refer to the typical performance in the specific tests indicated and should not be construed to imply the behavior of this or any other material under actual fire conditions.

Cleaning Information

W-S: Water-based cleaning agents and foam may be used for cleaning. This fabric may also be cleaned with mild, water-free solvents. Cleaning by a professional cleaning service is recommended.

Additional Information



Century, Columbus and Traction meet or exceed ACT® Performance Guidelines.



Century, Columbus and Traction can be applied without need for further testing to any office panel system which has been authorized for use with fabrics included in UL's Fabric Recognition Program.



Century, Columbus and Traction are directional fabrics. Please use caution when cutting and applying.

Dye lots may vary from samples shown.

Final determination of the suitability of this product for an application rests with the user.

Proposition 65 Warning: This product may contain chemicals known to the State of California to cause cancer, birth defects and other reproductive harm.

Laminate Information

Wilsonart® Contract Laminate has always been the workhorse surface of commercial and residential interiors.

For design options, versatility, performance and price, it's also one of the best values in surfacing. State-of-the-art design and manufacturing now let laminate be itself, or almost anything you want it to be. All Wilsonart Laminates are commercially rated and can contribute to LEED® Certification, having received GREENGUARD® Indoor Air Quality and GREENGUARD® Children & Schools Certifications for low Emitting Products. Which means that beyond being among the most diverse materials available, they also happen to be among the best.

NEMA Test	Typical Wilsonart Type 350	NEMA Standard HGP
Thickness	0.039" ± 0.005" (0.99mm ± 0.13mm)	0.039" ± 0.005" (1mm ± 0.12mm)
Appearance	No ABC def.	No ABC def.
Light Resistance	Slight effect	Slight effect
Cleanability (Cycles)	10	20 (max.)
Stain Resistance Reagents 1-10 Reagents 11-15	No Effect Slight Effect	No Effect Moderate Effect
Boiling Water Resistance	No Effect	Slight Effect
High Temperature Resistance	Slight Effect	Slight Effect
Impact Resistance	55" (1397mm)	30" (762mm) (min.)
Radiant Heat Resistance	140 seconds	100 seconds (min.)
Dimensional Stability Machine Direction Cross Direction	0.5% 0.8%	1.1% (max.) 1.4% (max.)
Surface Wear Resistance (Cycles)	Meets or Exceeds 400	400 (min.)
Formability*	*9/16" Face (14.28mm) *3/16 Back (4.76mm)	*5/8" Face (16.00mm)
Blistering	70 Seconds	55 Seconds

*Radius for face is actually the radius of the form around which the laminate is postformed. The radius for the back is actually the radius to which the decorative face is postformed.



Samples available upon request. Many more finishes available!



1.800.817.1187 conklinoffice.com